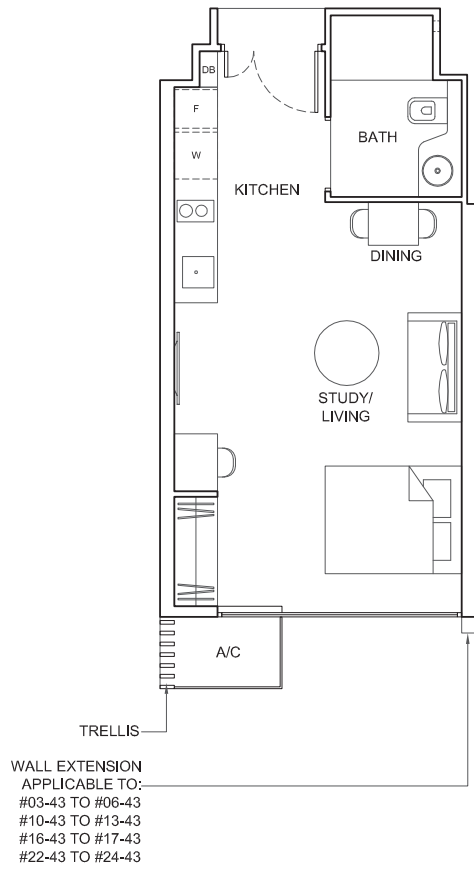


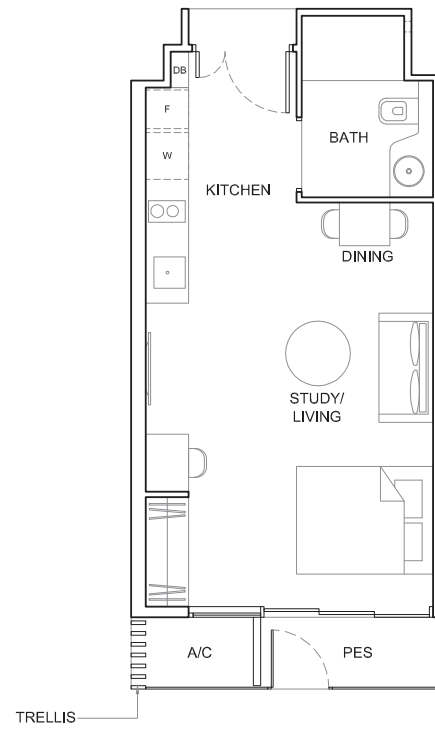
TYPE S1

Area: 36 sq m (include 2 sq m A/C LEDGE)
Unit(s): #03-43 TO #24-43



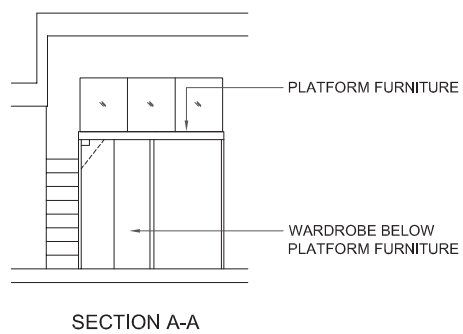
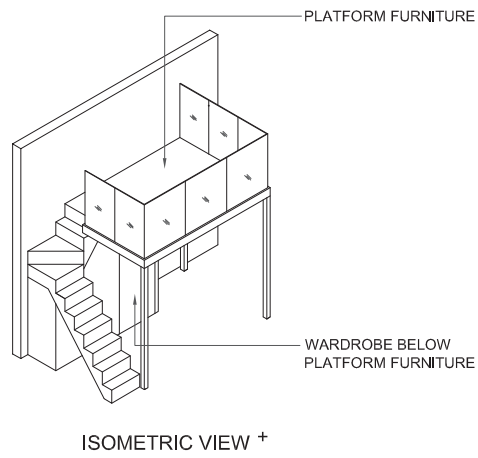
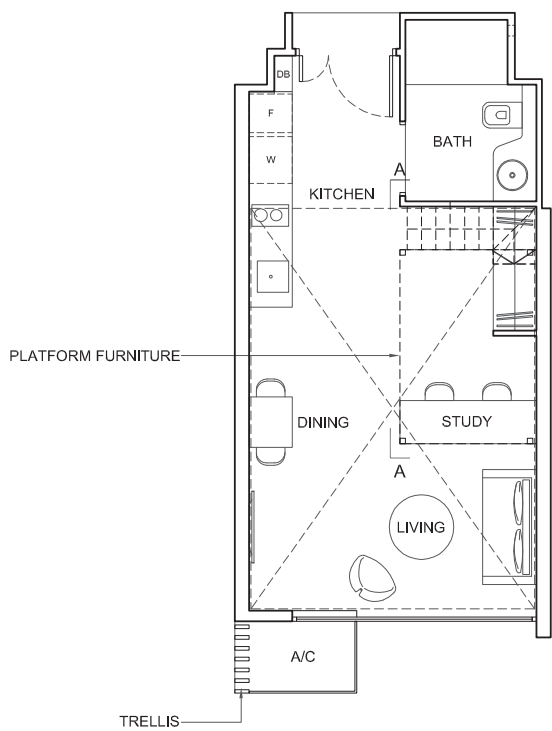
TYPE S1-P

Area: 39 sq m (include 2 sq m A/C LEDGE, 3 sq m PES)
Unit(s): #02-43



TYPE S1-PH

Area: 60 sq m (include 2 sq m A/C LEDGE)
(include 24 sq m VOID)
Unit(s): #25-43



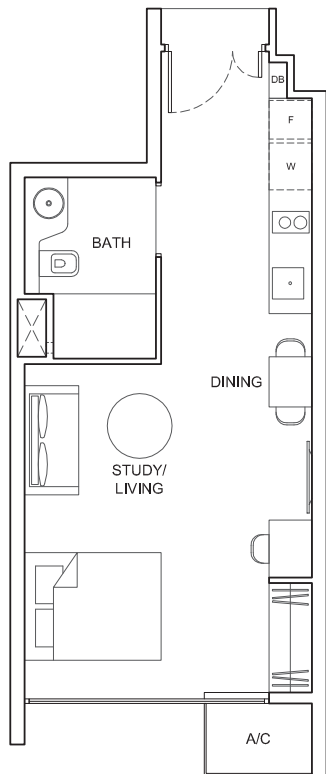
NOTE:

+ Isometric views have excluded railing drawings

Plans are subject to change/amendments as may be required and/or approved by the Developer and/or the relevant authorities and do not form part of any offer or contract. These are not drawn to scale and are for the purpose of visual presentation only.

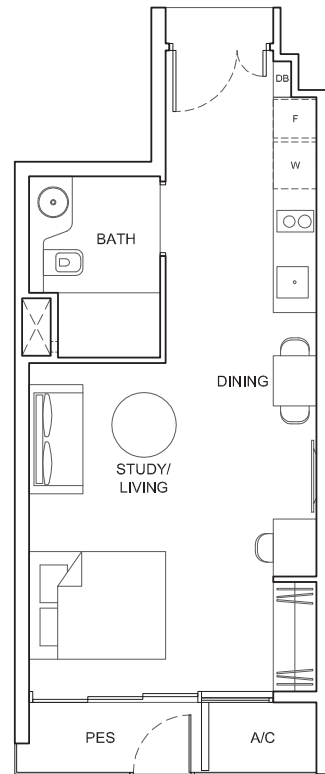
TYPE S2

Area: 37 sq m (include 2 sq m A/C LEDGE)
Unit(s): #03-47 TO #24-47



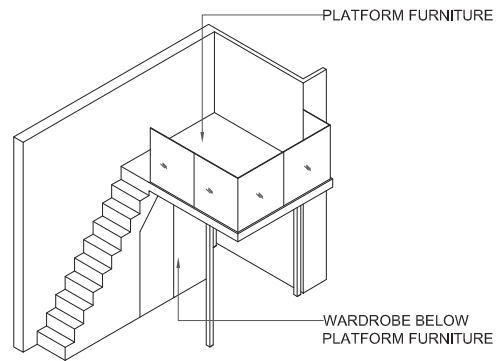
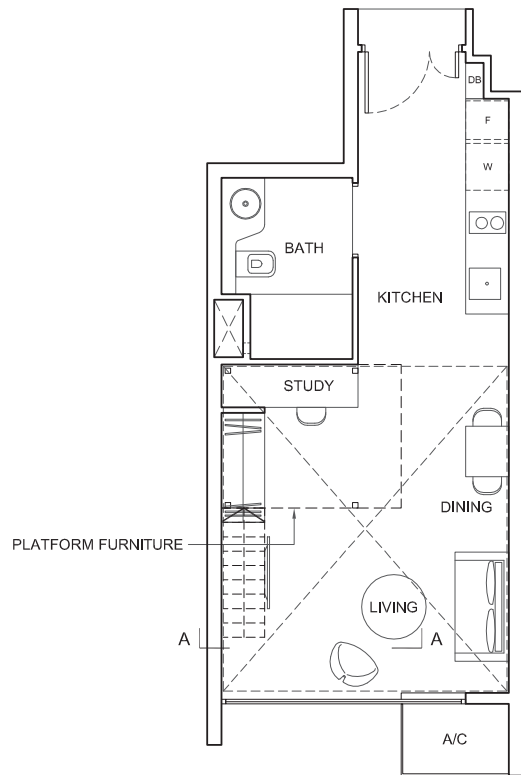
TYPE S2-P

Area: 40 sq m (include 2 sq m A/C LEDGE, 3 sq m PES)
Unit(s): #02-47

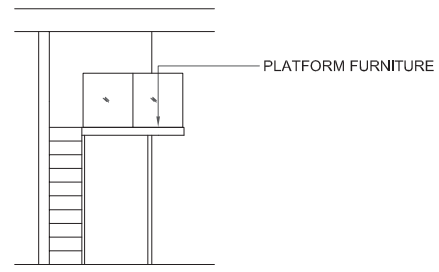


TYPE S2-PH

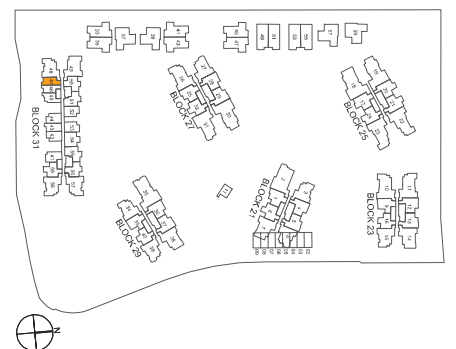
Area: 57 sq m (include 2 sq m A/C LEDGE)
(include 20 sq m VOID)
Unit(s): #25-47



ISOMETRIC VIEW +



SECTION A-A



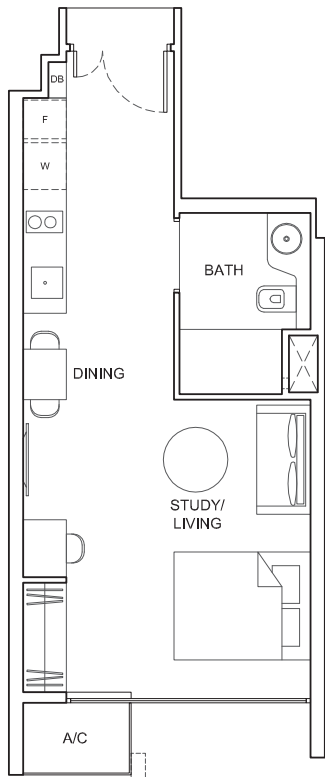
NOTE:

+ Isometric views have excluded railing drawings

Plans are subject to change/amendments as may be required and/or approved by the Developer and/or the relevant authorities and do not form part of any offer or contract. These are not drawn to scale and are for the purpose of visual presentation only.

TYPE S3

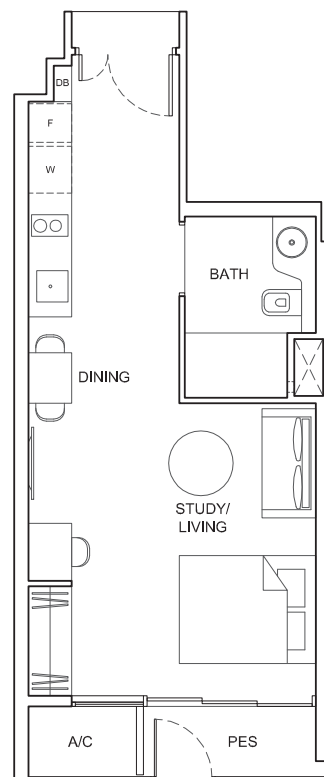
Area: 36 sq m (include 2 sq m A/C LEDGE)
Unit(s): #03-46 TO #24-46



WALL APPLICABLE TO:
#05-46 TO #06-46
#13-46 TO #14-46
#21-46 TO #22-46

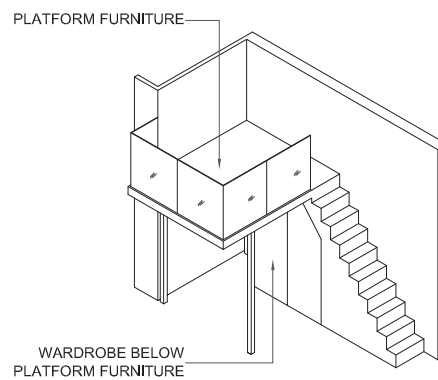
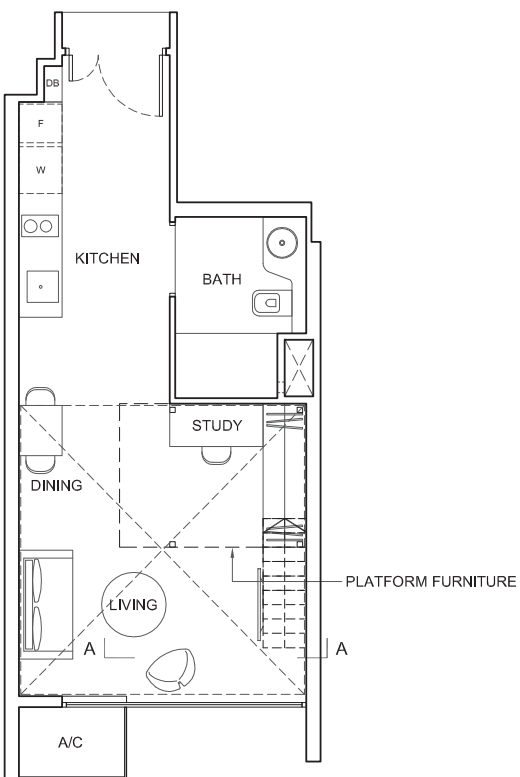
TYPE S3-P

Area: 39 sq m (include 2 sq m A/C LEDGE, 3 sq m PES)
Unit(s): #02-46

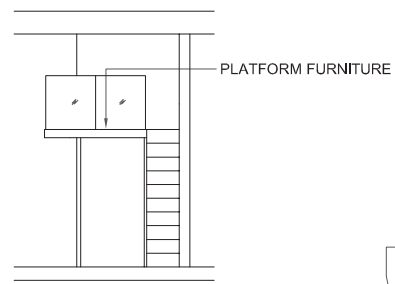


TYPE S3-PH

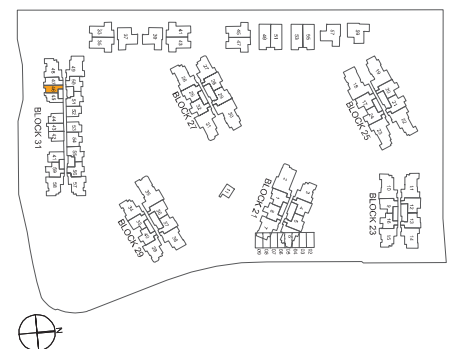
Area: 54 sq m (include 2 sq m A/C LEDGE)
(include 18 sq m VOID)
Unit(s): #25-46



ISOMETRIC VIEW +



SECTION A-A



NOTE:

+ Isometric views have excluded railing drawings

Plans are subject to change/amendments as may be required and/or approved by the Developer and/or the relevant authorities and do not form part of any offer or contract. These are not drawn to scale and are for the purpose of visual presentation only.