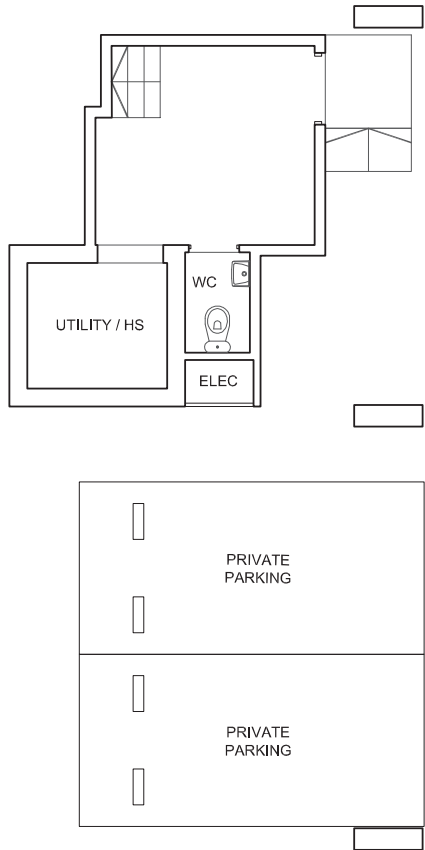


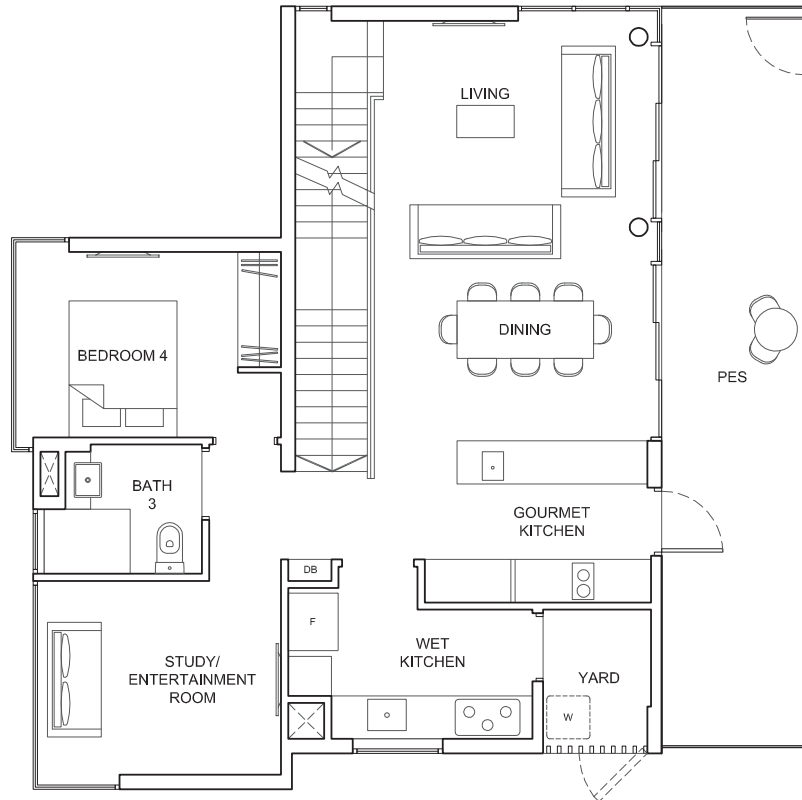
BUNGALOW

Area: 254 sq m (include 23 sq m CARPARK, 5 sq m AC LEDGE, 21 sq m PES)
(include 26 sq m VOID)

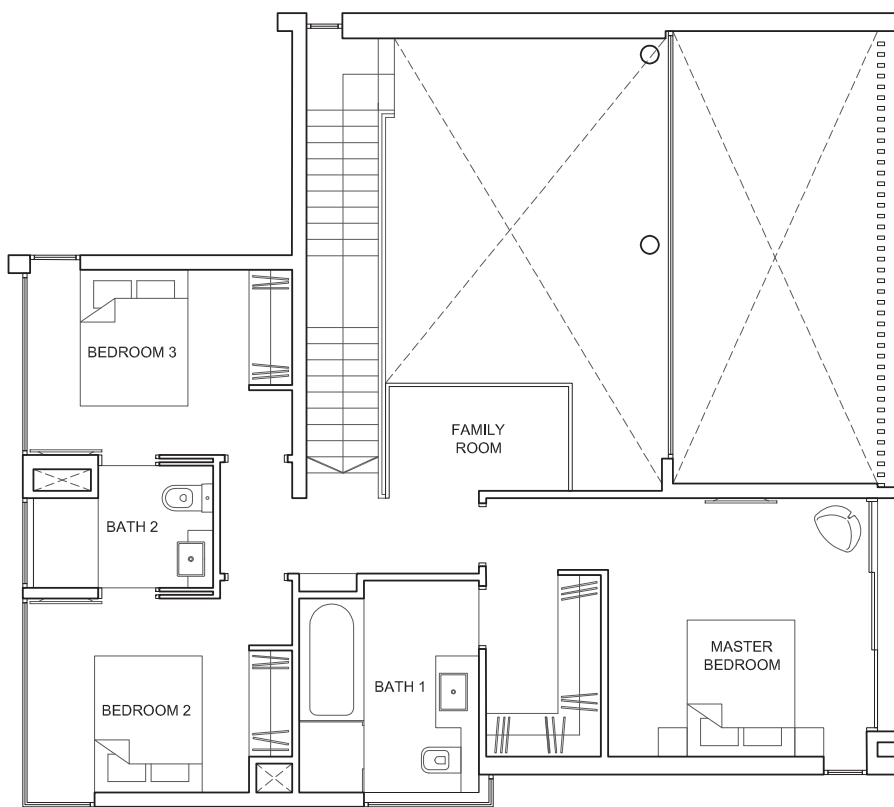
House No. 37



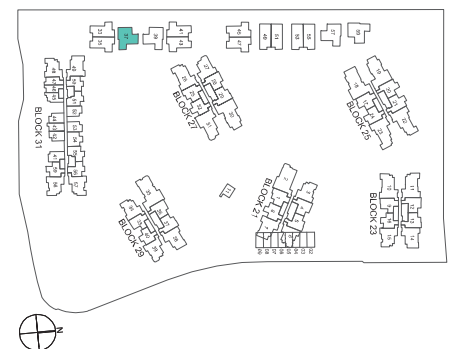
1ST STOREY LOWER



2ND STOREY



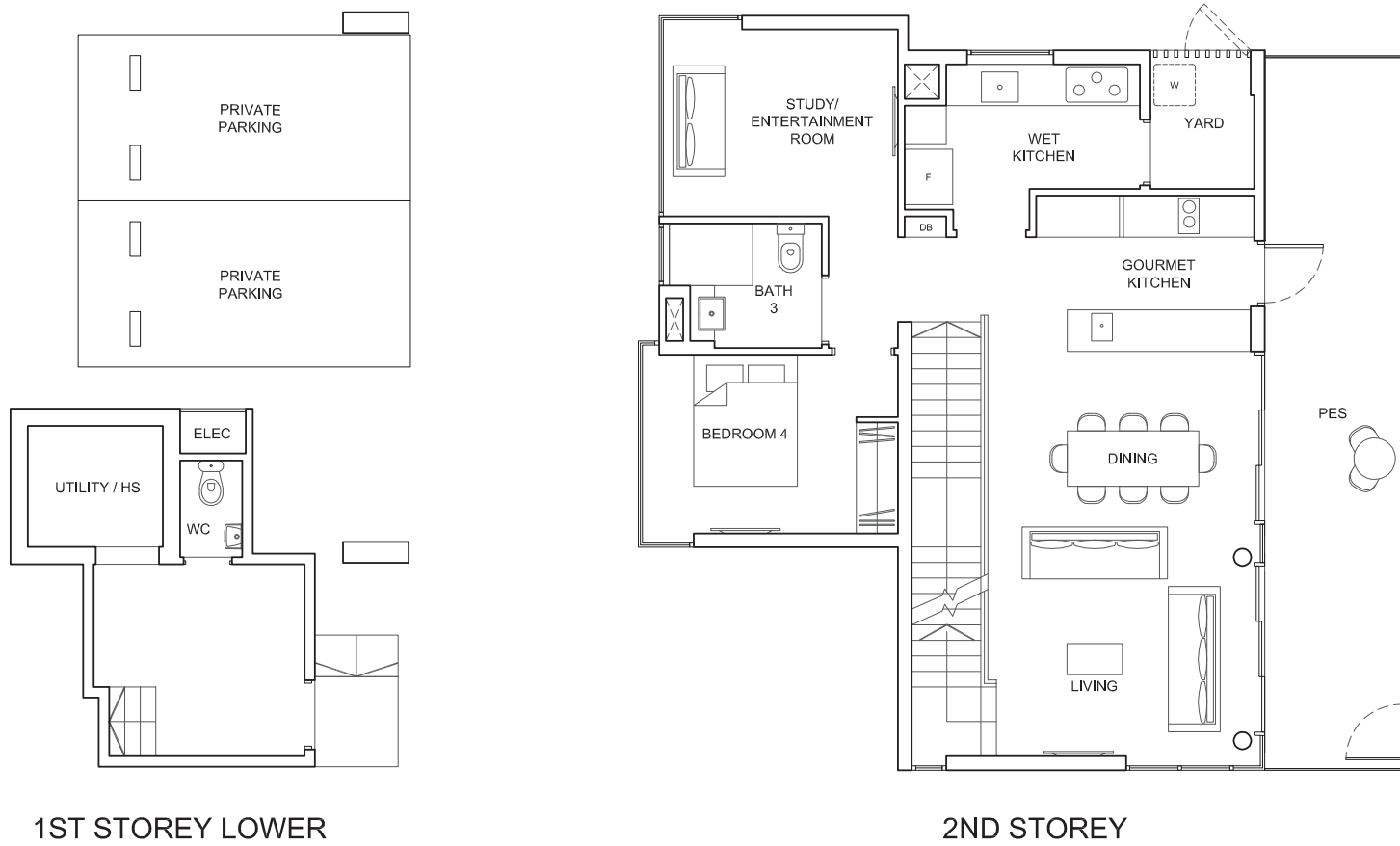
3RD STOREY



BUNGALOW

Area: 254 sq m (include 23 sq m CARPARK, 5 sq m AC LEDGE, 21 sq m PES)
(include 26 sq m VOID)

House No. 39

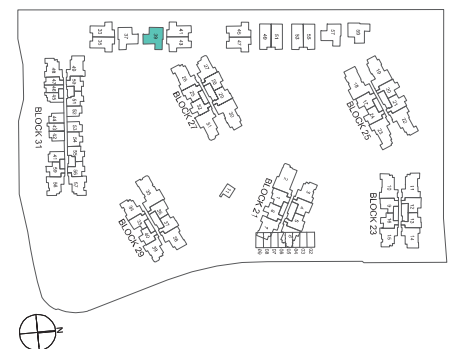


1ST STOREY LOWER

2ND STOREY



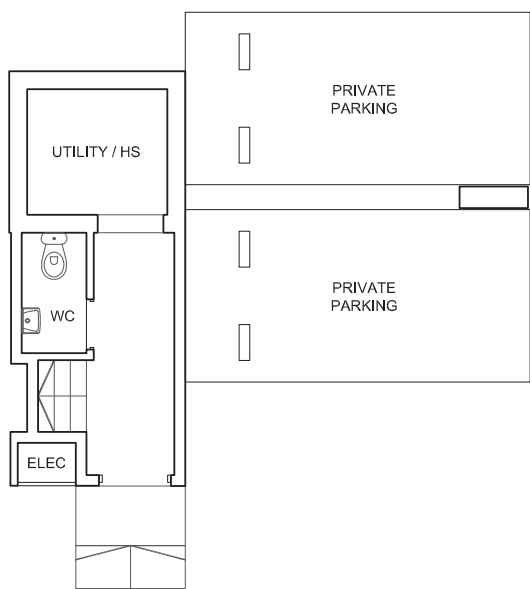
3RD STOREY



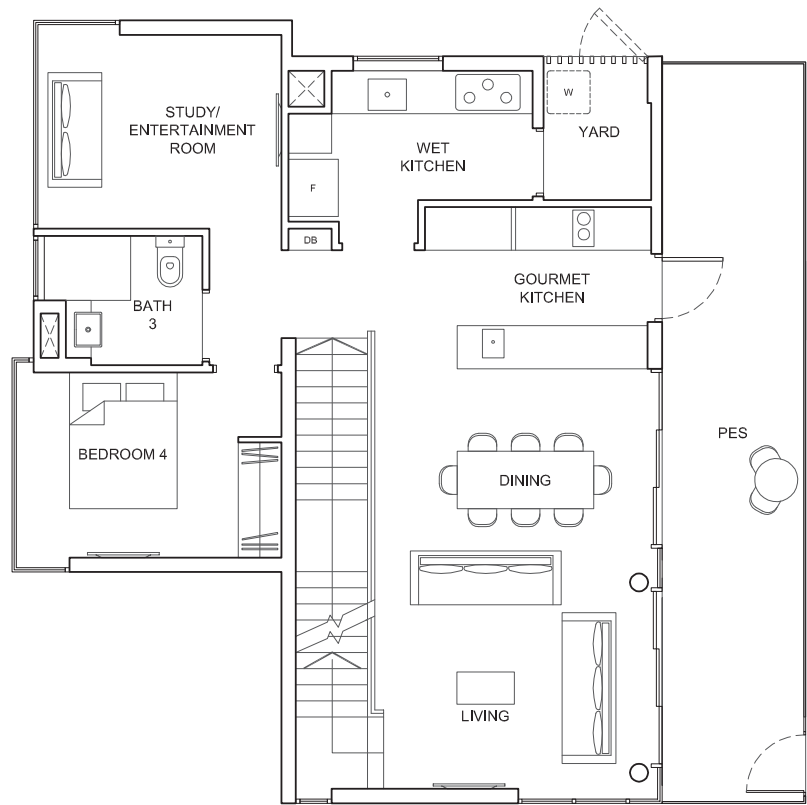
BUNGALOW

Area: 254 sq m (include 24 sq m CARPARK, 5 sq m AC LEDGE, 21 sq m PES)
(include 28 sq m VOID)

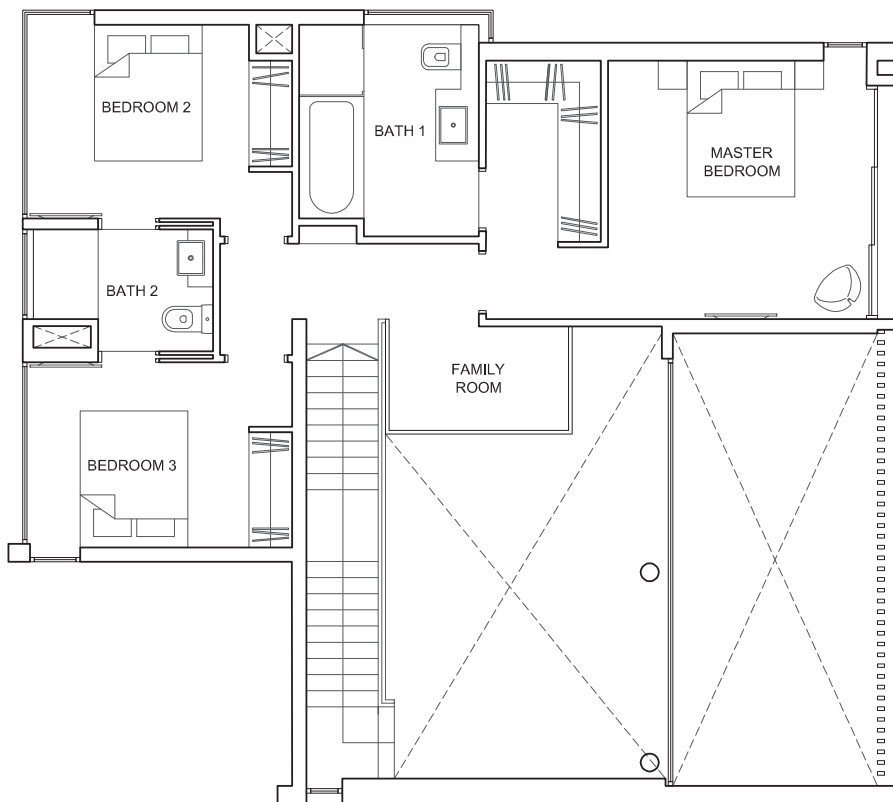
House No. 57



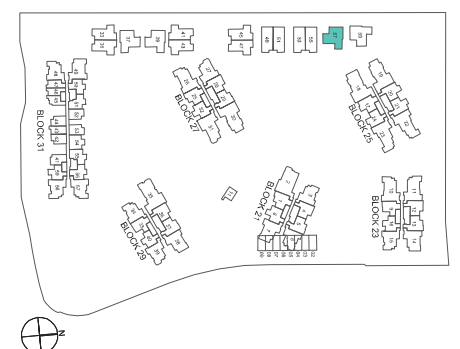
1ST STOREY UPPER



2ND STOREY



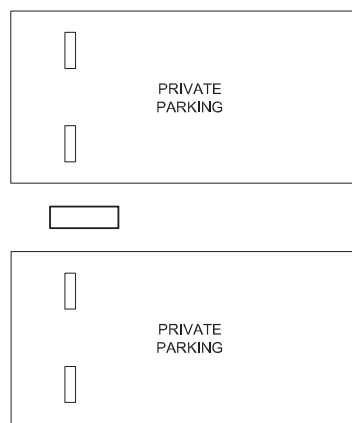
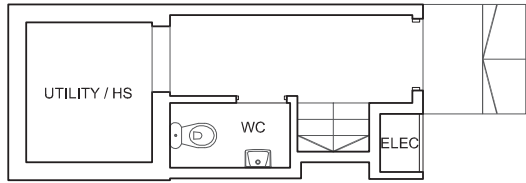
3RD STOREY



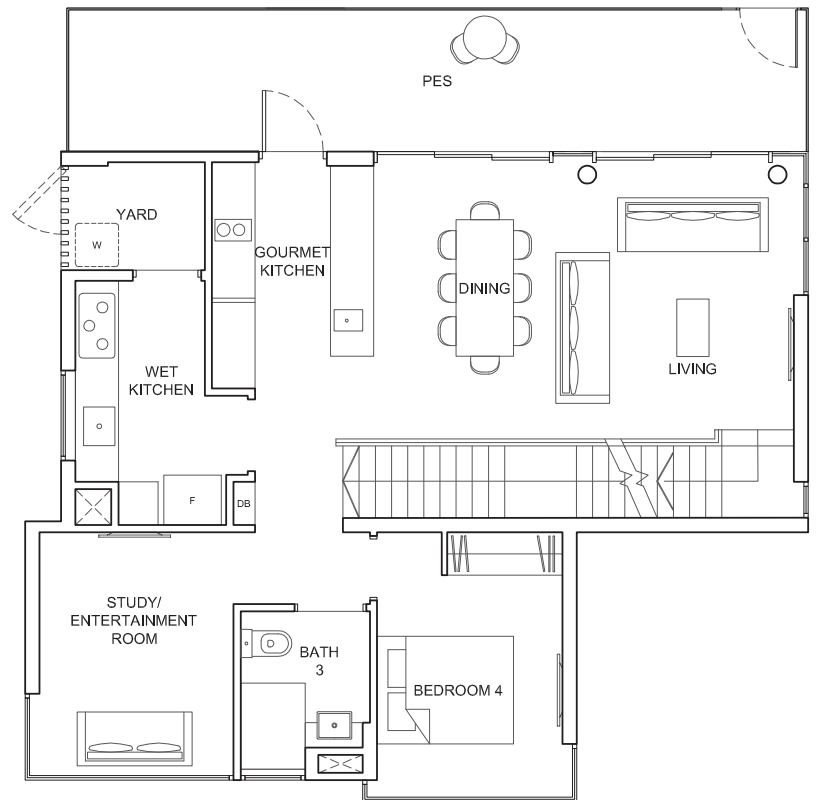
BUNGALOW

Area: 254 sq m (include 24 sq m CARPARK, 5 sq m AC LEDGE, 21 sq m PES)
(include 28 sq m VOID)

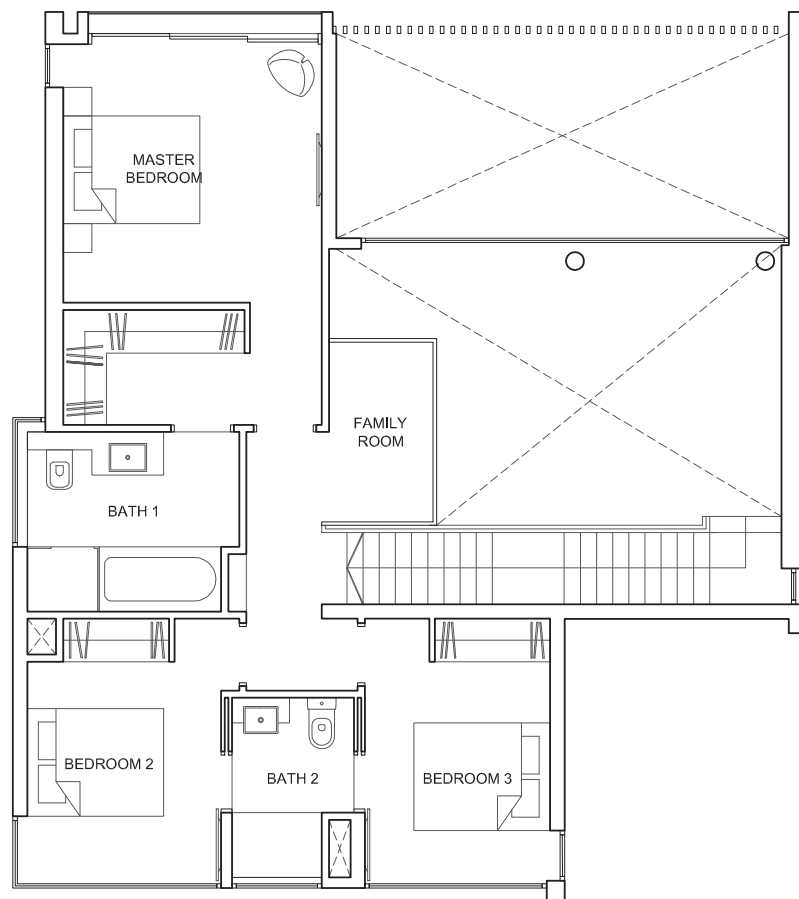
House No. 59



1ST STOREY UPPER



2ND STOREY



3RD STOREY

